



“The pioneer of eco-friendly Agrochem”

---

# Tonic Bio-PGPR

**OVERSEAS BUSINESS TEAM**



## ♠ GENERAL INFORMATION

---

### Tonic stands for communication and catalyzation

- Tonic is 100% natural pesticide that comes from plant extract
- To control antioxidant internal of plant
- Flexible for unstable environment
- Develop antistress tolerance
- Increase fertilization and fruit setting

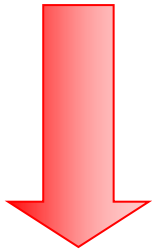


# ♠ MODE OF ACTION

---

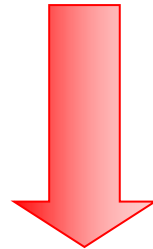
Natural hormone

Auxin, Cytokinin, Gibberellin



Stimulation by auxin makes cell auxesis

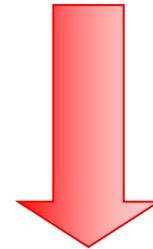
Vitamins



To control antioxidant Internal of plant

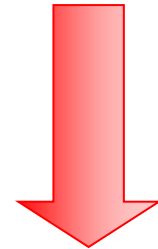
Natural aminoacids

$\beta$ -Glucan, Betaine



Flexible for unstable environment  
Develop Antistress tolerance

Natural polysaccharides



Increase Fertilization and fruit setting



## ♠ EFFECT OF 'TONIC'

---

- Enhancement of root
- Promote absorption of water and nutrient for crops
- Develop a tolerance for stress, this makes stronger plant
- Increase quality and quantity
- Promote flowering and improve fruit set
- Extend growing period of vegetables and fruits
- Promote photosynthesis and content of chlorophyll
- Increase storability
- Reduce initial flowering period



# ♠ APPLICATION METHOD

Target group		Recommended time	Dilution
Fruits	apple	During the falling of blossoms After the falling of blossoms 10 to 15days In the middle of fruit auxesis	5000 times
	pear	The time differentiation for flower bud	
	grape	A week before flowering , after a week of falling blossoms The beginning of coloring	
	persimmon	A week before flowering, the time for fruit setting after falling blossoms	
	Peach, plum	The time of falling blossoms, In the beginning and middle of fruit auxesis	
	tangerine	The time of bud appearance, after falling blossoms, the first physiologically falling of fruit, summer sprout germinating period, the second physiologically falling of fruit, the time of fruit auxesis Autumn sprout gerinating period	



# ♠ APPLICATION METHOD

Target group	Recommended time		Dilution
Fruits and vegetables	Within 5 days after transplantation Every 20 days after first treatment		5000 times
Green vegetables Root vegetables	Within 5 days after transplantation Every 20 days after first treatment		
ginseng	Early spring ~ the middle of June	2 times	
	the middle of august ~ the middle of September	1 ~ 2 times	
strawberry	Within 5 days after transplantation		
	Before the first flowering		
	Every 20 days after flowering		

# ♠ FIELD TRIAL RESULTS



- FRUIT SET RATE IS EXCELLENT
- FRUIT SET EVENLY
- THE LENGTH OF GRAPE IS LONGER



- BIGGER, LARGER BY TONIC



# ♠ FIELD TRIAL RESULTS



Longer  
&  
bigger



# ♠ FIELD TRIAL RESULTS



GA3 Control 2004 JiangXi Jebsen Copyright

Longer by  
TONIC



Wider by  
TONIC



Increase  
quality and  
quantity



Control 2004 JiangXi Jebsen Copyright

# ♠ FIELD TRIAL RESULTS-CHINA



NON TREATMENT

*TONIC*



TREATMENT



NON TREATMENT

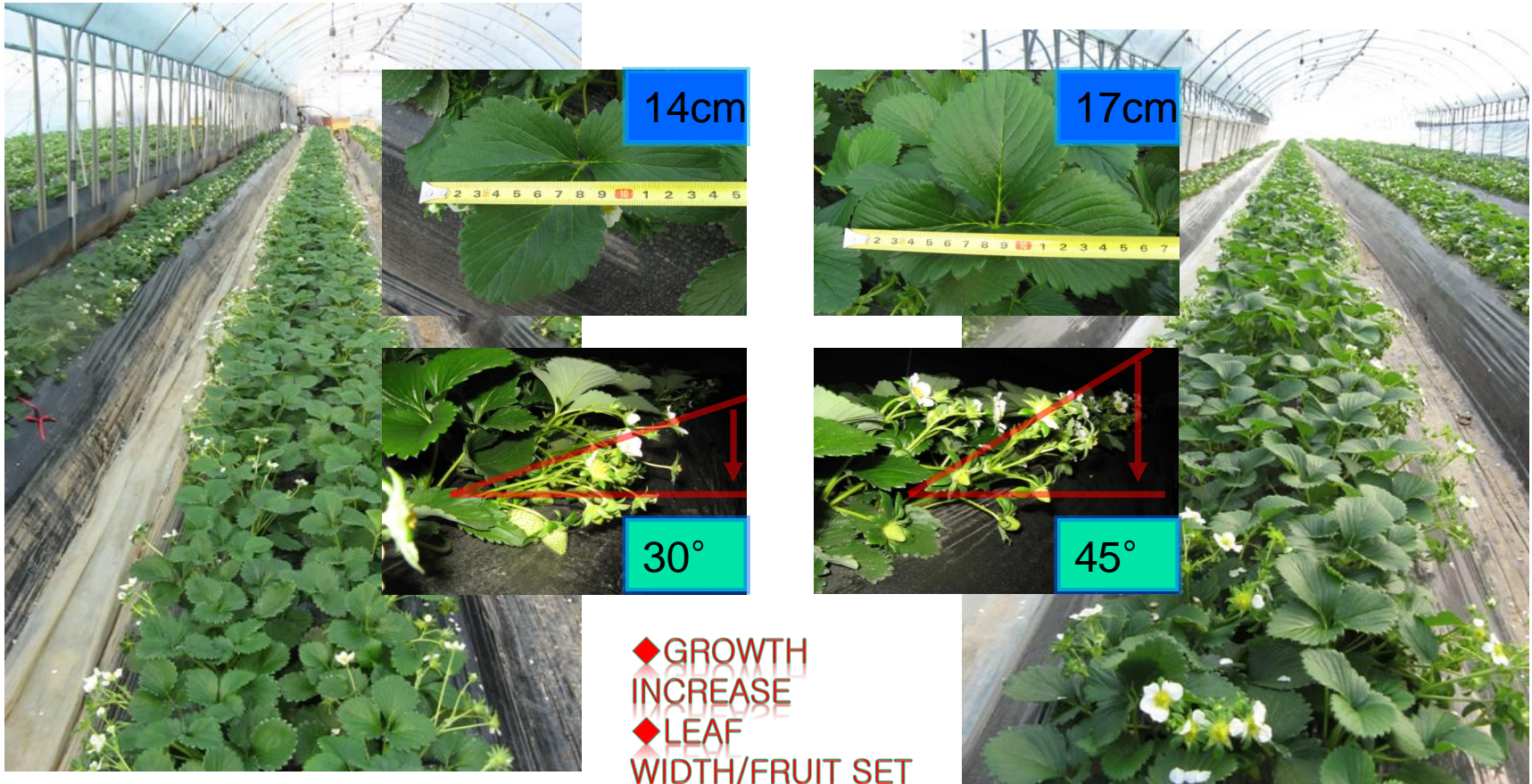
*TONIC*



TREATMENT

# ♠ FIELD TRIAL RESULTS

## Promote Vitality of tree for strawberry



Non treatment

Treatment

# ♠ FIELD TRIAL RESULTS

Pear: Spray 20 and 35days after flowering period



- As you can see , fruit stalk is long and thick. It makes fruit big and brings great output
- Tonic makes your work easy

# ♠ FIELD TRIAL RESULTS

## Prevention freezing damage for blueberry



No damage by freezing



**Promote  
bud's  
development**

# ♠ FIELD TRIAL RESULTS

Great efficacy for blueberry



TONIC  
→



- ① Fruit setting ratio is high.
- ② High fruits and high fruit
- ③ Vitality of tree is strong and no shattering

# ♠ FIELD TRIAL RESULTS

Showing great differences



Fruit cluster elongation



Fruit cluster elongation and yield increase



# ♠ FIELD TRIAL RESULTS

Cucumber: Trimming, yeild and harvest duration extension



- ✓ No malformation
- ✓ Even quality
- ✓ Quantity is up by 15%.



# ♠ FIELD TRIAL RESULTS

Green vegetables / Fruit vegetables



Red pepper



Fruit plump  
BY TONIC



Non treatment

Paprika



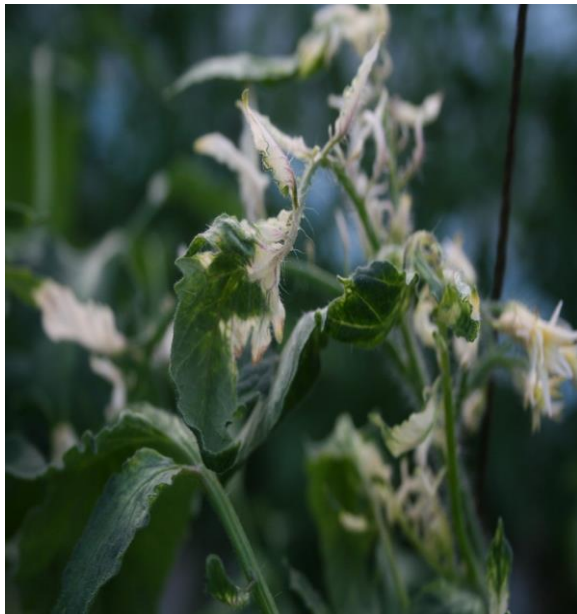
Treatment

Fruit set  
increase  
BY TONIC

# ♠ FIELD TRIAL RESULTS

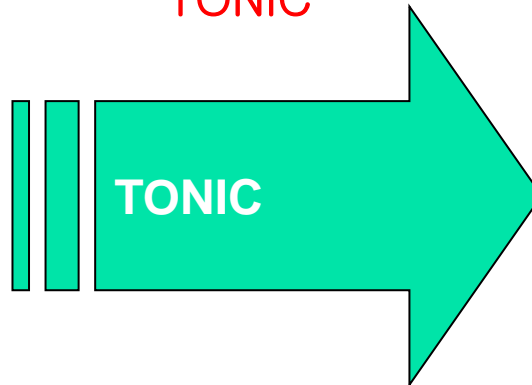
## Recovery from damage

### Herbicides damage



tomato

Quick  
recovery by  
TONIC





## ♠ Auxin: Plant growth regulator

---

- Promote Cell division, cell differentiation and organ formation
- Auxin's stimulation pumps hydrogen ion out to cell wall and it makes cellulose expanded
- Cellulose expansion brings great cell auxesis